



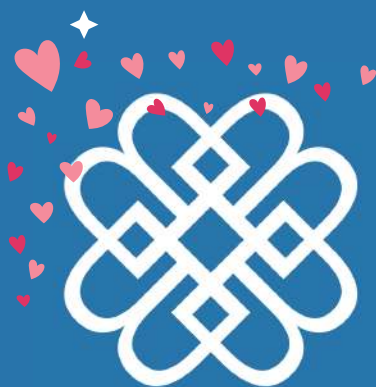
The Bradsher Brief

As February arrives, it's the perfect time to start looking ahead to the warmer months and the outdoor spaces you'll soon be enjoying. Planning now allows you to take advantage of thoughtful design, quality craftsmanship, and a smoother project timeline as spring approaches.

In this month's newsletter, we're sharing inspiration, planning tips, and updates from the Bradsher Custom Outdoor team to help you make confident decisions for your outdoor living goals. From early concepts to final details, we're here to guide you every step of the way.

Thank you for trusting Bradsher Custom Outdoor. We look forward to helping you create an outdoor space that's built to last and designed for the way you live.

Bradsher team!



In this newsletter:

- A Letter From The President
- Showcase Project
- Employee Spotlight
- Landscaping Tips
- Reminders

Bible Verse of the Month:

“I have said these things to you, that in me you may have peace. In the world you will have tribulation. But take heart; I have overcome the world” - John 16:33

A letter from the President:

Dear Bradsher Custom Outdoor family and valued clients,

As we move further into the new year, February is a time for reflection, planning, and renewed focus. At Bradsher Custom Outdoor, this season reminds us of the importance of preparation, laying the groundwork now for projects that will be enjoyed for years to come.

Our team is already working closely with clients to design outdoor spaces that are not only beautiful, but functional, lasting, and thoughtfully built. From early planning conversations to fine construction details, we remain committed to delivering quality craftsmanship and an exceptional customer experience.

I want to personally thank you for placing your trust in Bradsher Custom Outdoor. Your confidence in our team, our process, and our work means a great deal to us. We value the relationships we've built and look forward to continuing to serve you as we move toward a busy and exciting spring season.

On behalf of our entire team, thank you for being part of the Bradsher Custom Outdoor family. We look forward to helping you bring your outdoor vision to life.

Warm Regards,

Stoney Bradsher

EMPLOYEE SPOTLIGHT

This month, we're spotlighting our **Construction, Maintenance, and Enhancement** Team Leaders; the people who keep our projects running smoothly and our standards high.

Construction Team Leaders oversee new builds and large-scale landscape construction projects from start to finish. They are responsible for coordinating crews, managing timelines, reading plans, and ensuring work is completed safely, efficiently, and to specification. Their leadership on-site keeps projects moving forward while maintaining quality and accountability.

Maintenance Team Leaders are responsible for the consistent care and long-term health of client properties. They manage daily routes, lead crews, and ensure each site meets company standards week after week. Their attention to detail and reliability play a key role in customer satisfaction.

Enhancement Team Leaders focus on improving and upgrading existing landscapes through seasonal projects and specialty services. They bridge the gap between maintenance and construction, turning opportunities into finished enhancements that elevate the overall property appearance.



Manuel
Maintenance Team Leader



Little Juan
Maintenance Team Leader



Big Juan
Maintenance Team Leader



Matthew
Maintenance Team Leader



Cruz
Construction Team Leader

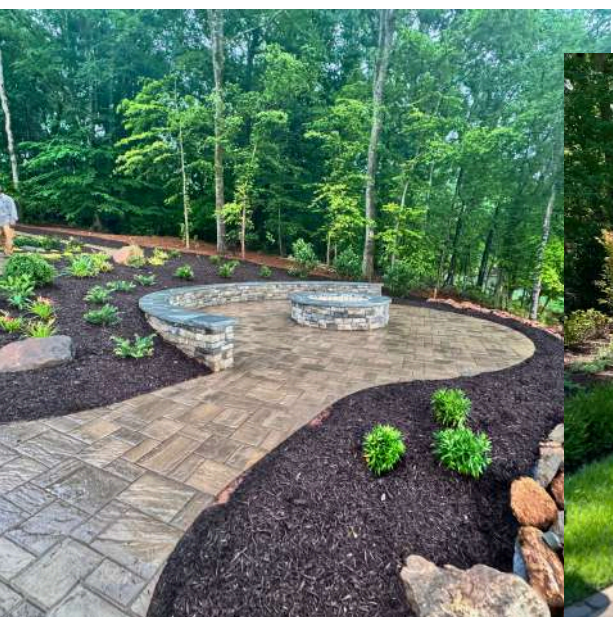


Leni
Construction Team Leader



Erick
Enhancement Team Leader

This month, we're highlighting the versatility and durability of stone across a wide range of applications, including homes, interior and exterior floors, pool decks, patios, driveways, and boathouse floors. From foundational structural elements to refined outdoor living spaces, stone delivers unmatched strength, natural beauty, and long-lasting performance. Its resistance to weather, wear, and time makes it an ideal choice for both functional surfaces and design-forward spaces, adding lasting value and character to any project.



FEBRUARY LANDSCAPING TIPS



Refresh Mulch & Beds

Inspect mulch levels and planting beds. Topping off mulch helps protect roots from temperature swings and prepares beds for spring planting.

Prepare Lawns for Growth

Remove debris, fallen branches, and leftover leaves to allow grass to breathe and warm evenly as temperatures rise.



As you plan for the months ahead, we appreciate the opportunity to be part of your outdoor living journey. Whether you're gathering ideas, refining plans, or ready to take the next step, our team is here to help bring your vision to life.

Thank you for choosing Bradsher Custom Outdoor. We look forward to working with you and creating an outdoor space you'll enjoy for years to come.

– The Bradsher Custom Outdoor Team



A few things to remember

- Don't forget that invoices are now sent out at the **beginning** of the month!
- You can pay your invoices directly through your Customer Portal! If you haven't set one up yet, please email us at admin@bradsheroutdoor.com and we will get you set up!

Thank you for reading!

FEBRUARY

Sunday	Monday	Tuesday	Wednesday	Thursday	Friday	Saturday
1	2 Groundhog Day	3	4	5	6	7
8	9	10	11	12	13	14 Valentine's Day
15	16 Presidents' Day	17	18	19	20	21
22	23	24	25	26	27	28

Bradsher Custom Outdoor Leadership Contact Info

Stoney Bradsher

President

sbradsher@bradsheroutdoor.com

252.430.9709

Lori Jones

Controller

ljones@bradsheroutdoor.com

252.432.1112

Antonio Arellano

Operations Construction Manager

aarellano@bradsheroutdoor.com

919.593.4190

Glenn Short

Lawn Maintenance Operations

Manager

gshort@bradsheroutdoor.com

252.425.5430

Maddison Roberson

Marketing Coordinator

mroberson@bradsheroutdoor.com

717.668.2193

Greg Audet

Senior Lawn Maintenance and
Enhancement Account Manager

gaudet@bradsheroutdoor.com

919.274.3172

<https://bradsheroutdoor.com/>

252-820-5314



P.O. Box 56
Henderson, North Carolina 27536